

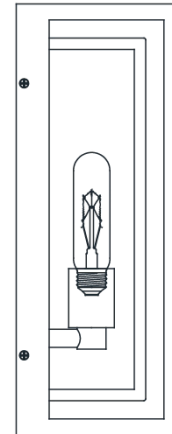
INSTALLATION INSTRUCTIONS



IMPORTANT

Before installing your Lights.com fixture, please make sure that you carefully read through these instruction sheets. Consider having your fixture installed by a qualified licensed electrician.

NOTE: The important safeguards and instructions that appear in this manual are not meant to cover all possible conditions and situations that may occur. It must be understood that common sense, caution and care, are factors that can't be built into any product. This approach must be used by the person(s) caring for and operating the fixture.



COLLECTION

Jaxon

APPLICATION

Outdoor Wall Sconce

MODEL NO.

LC005217

GENERAL INFORMATION

All electrical connections must be made in accordance with all ordinances, and Local and National Electrical Codes. These fixtures are intended for mounting to a standard 4" junction box. The box must be directly supported by the building structure and be ETL or U.L. Recognized.

STEP BY STEP INSTRUCTIONS

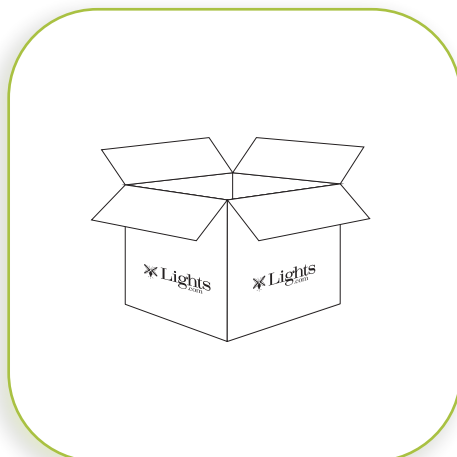
Before starting your installation, disconnect the power by turning off the circuit breaker or by removing the fuse at the fuse box. Just turning the light off at the light switch is not sufficient to prevent electrical shock.

WHAT WE PROVIDE

- Wall Sconce
- Mounting and Wiring Hardware

WHAT YOU NEED

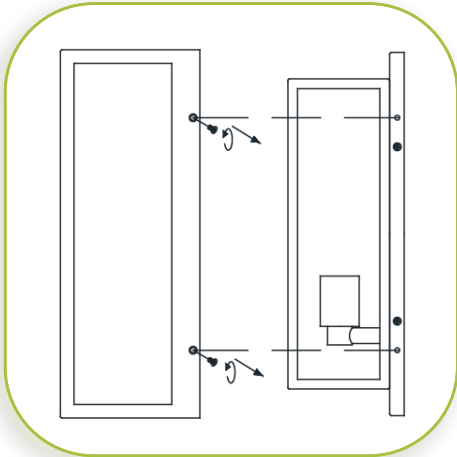
- Phillips head Screwdriver
- Wire Cutters
- Wiring Supplies as Specified by Electrical Code
- Electrical Tape
- 1 x 100W E26 Bulb



1

UNPACK FIXTURE

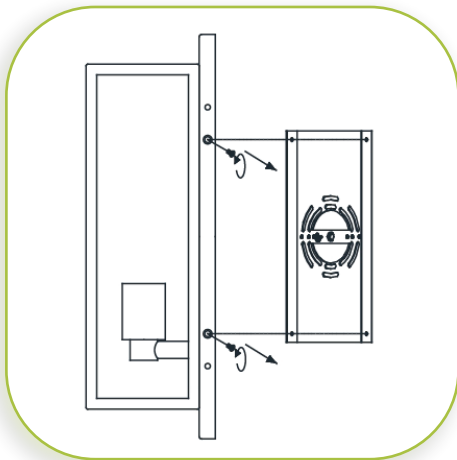
INSTALLATION INSTRUCTIONS



2

PREPARE FIXTURE

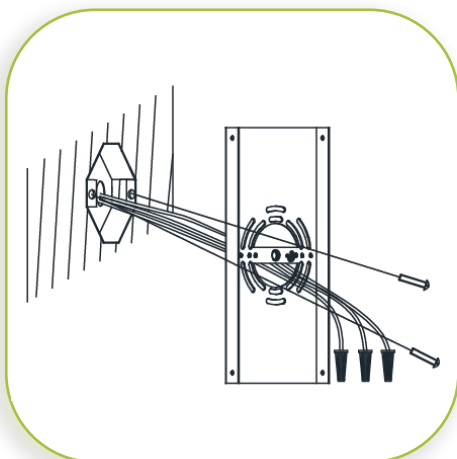
Remove the outer cage by unscrewing the screws from the fixture body.



3

PREPARE MOUNTING PLATE

Loosen the screws on the backplate, and take off the mounting plate.



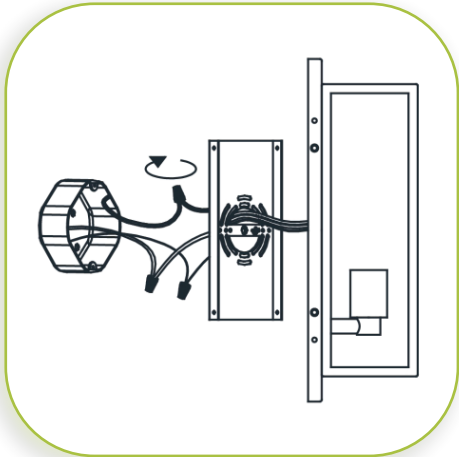
4

INSTALL THE MOUNTING PLATE

NOTE: Make sure to attach the flat side of the mounting plate to the J-box. This fixture can only be mounted vertically.

If there is an existing fixture, remove it. Expose the supply wires from the J-Box. Insert the supply wires through the mounting plate. Secure the mounting plate using the Phillips Head screws provided. Tighten to secure.

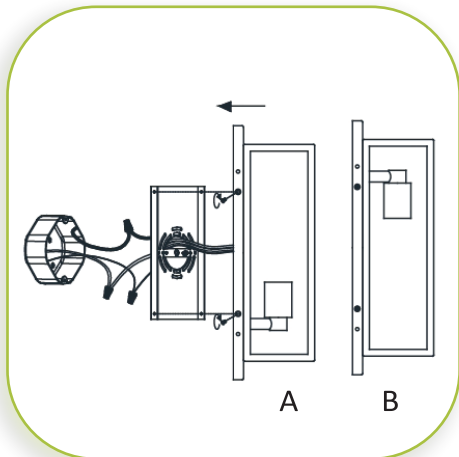
INSTALLATION INSTRUCTIONS



5

MAKE WIRE CONNECTIONS

Connect the BLACK fixture wire to the BLACK supply wire and the WHITE fixture wire to the WHITE supply wire. Connect the fixture GROUND wire to the J-BOX GROUND wire or wrap around one of the protruding screws on the mounting plate. Secure all connections with the supplied wire nuts and electrical tape (not supplied).

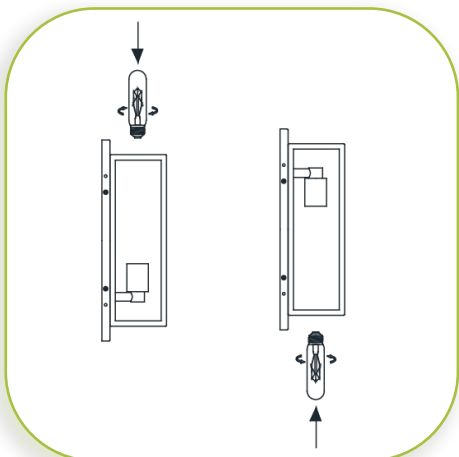


6

CONNECT FIXTURE TO MOUNTING PLATE

Position the fixture body over the mounting plate. Secure the fixture body to the mounting plate with the four screws on the sides.

*The fixture body can be installed with socket facing up (A) or down (B).

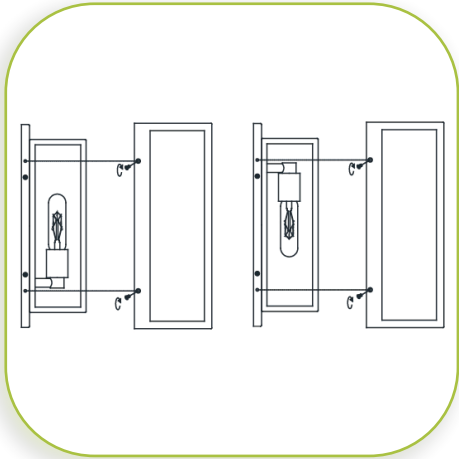


7

INSTALL BULB

Install your 100W E26 bulb. **MAXIMUM WATTAGE 100W.**
DO NOT EXCEED THE WATTAGE AS STATED ON THE WARNING LABEL.

INSTALLATION INSTRUCTIONS

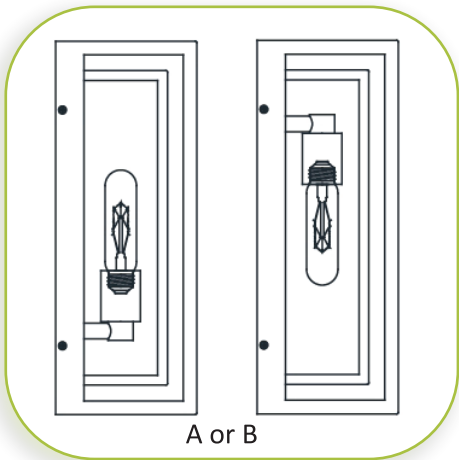


8

INSTALL OUTER CAGE

Install the outer cage to the fixture body by securing with the four screws on the sides.

NOTE: OPENING ON THE CAGE MUST FACE DOWNWARD



A or B

9

RESTORE THE ELECTRICITY AND CHECK THE OPERATION OF YOUR NEW FIXTURE

CAUTION

Please ensure that the fitting is cool and switched off before replacing the bulb. DO NOT use bulbs that might exceed the maximum wattage, stated on caution label.

DIMMER NOTE

For the best lighting experience, we recommend using a dimmer. Not only does this allow you to create a great ambiance, it allows for energy savings and extends the life of the bulbs.