

ASSEMBLY INSTRUCTION  
EASTON OUTDOOR  
SMALL WALL LIGHT 14"  
MODEL NO. LC005697



All electrical components must be installed by a licensed electrician in accordance with the National Electric Code and the appropriate local electrical codes.



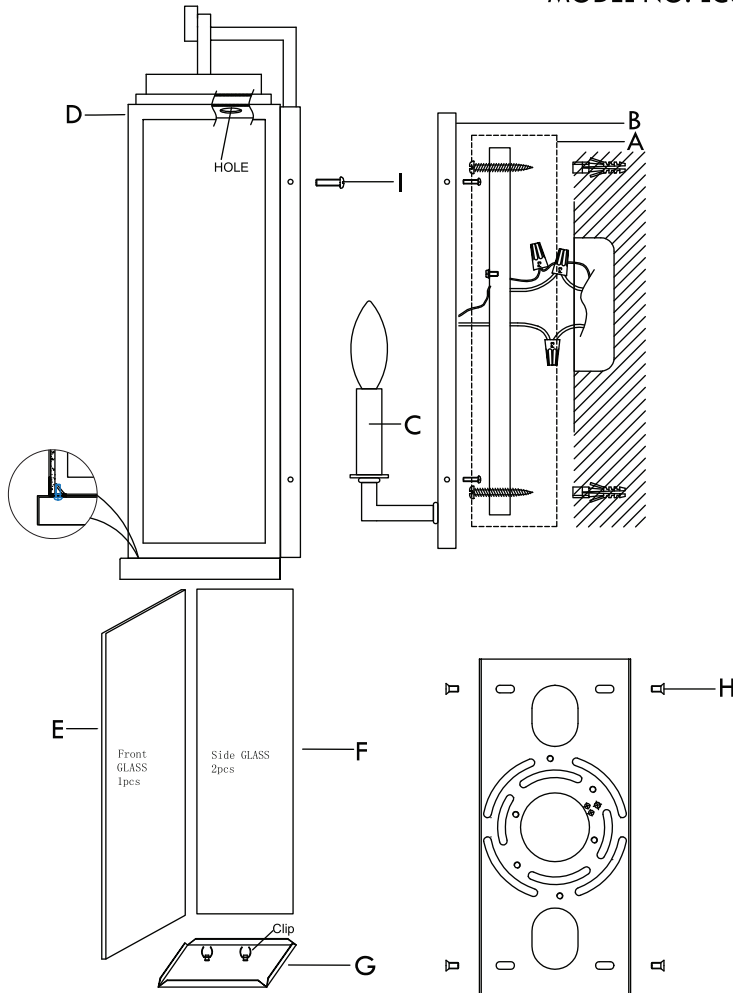
You will need 1-Candelabra Base Bulb  
40 Watts Recommended 60 Watts Max.

USE LED BULBS FOR EXTENDED USE

This fixture is Wet Rated

## HOW TO INSTALL

- Loosen the back plate from the frame.
  - If the outlet box is around the center of the mounting plate, Attach the mounting plate onto the outlet using the two outlet box screws directly.
  - If the outlet box is far off the center of the mounting plate, please proceed with the following steps:
    - Place the mounting plate over the outlet box and mark 4 holes on the wall surface at the center of the hole on the mounting plate.
    - Drill the holes at the marked points and insert the wall anchors.
    - Place the mounting plate over the outlet box and secure with the anchor screws.
- Attached the back plate to the mounting plate using the mounting plate screws then put the candle sleeves on the socket.
- Install the glass panels onto the frame and secure with the clips on the bottom of the frame.
- Insert the metal cover through the bottom of the fixture and push it until the clips on the cover protrude through the holes on the top of the frame. Press firmly to secure the glass.
- Install the frame onto the backplate and secure with the backplate screws.



## PART NUMBER

- (1)-Mounting hardware
- (1)-Backplate with socket
- (1)-2.75"Candle Sleeve White
  - (1)-2.75"Candle sleeve Gold
- (1)-Frame
- (1)-Front Glass Panel W4"\*H10.75"
- (2)-Side Glass Panel W3.25"\*H10.75"
- (1)-Metal Cover
- (4)- Mounting plate Screws
- (4)-Backplate flat head Screws

WARNING: This product can expose you to Lead which is known to the state of California to cause cancer and/or birth defects or reproductive harm. For more information go to [www.P65Warnings.ca.gov](http://www.P65Warnings.ca.gov)