

ASSEMBLY INSTRUCTION  
SELLAH FLUSH MOUNT 15"  
MODEL NO. LC005707



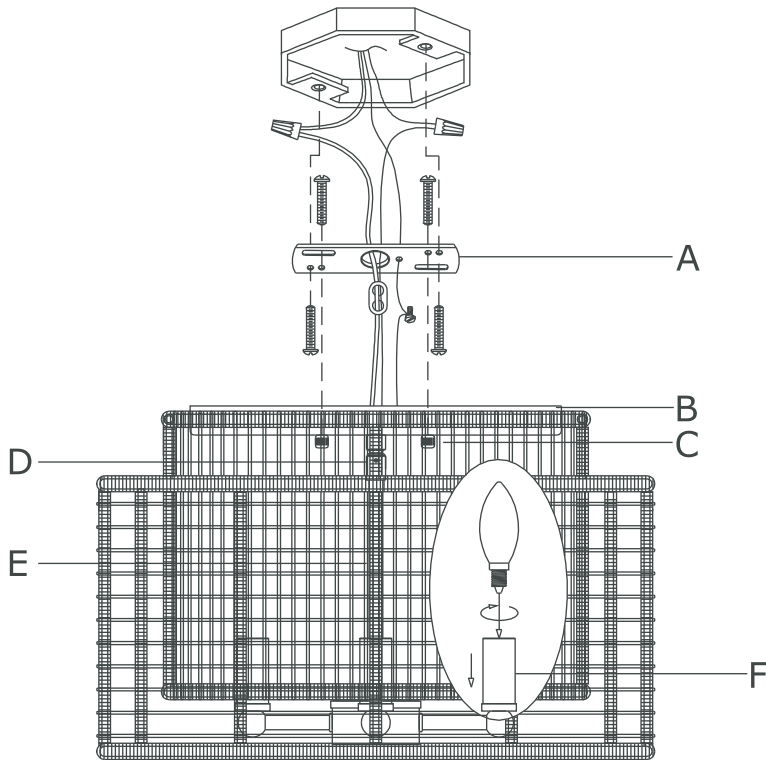
All electrical components must be installed by a licensed electrician in accordance with the National Electric Code and the appropriate local electrical codes.



You will need 4-Candelabra Base Bulb  
40 Watts Recommended 60 Watts Max.

USE LED BULBS FOR EXTENDED USE

This fixture is Damp Rated



## HOW TO INSTALL

1. Raise the canopy onto the outlet box, and secure it with the ball nuts.
2. Place the candle sleeve onto the socket and insert recommended bulb (not included).

## PART NUMBER

- A. (1)-Mounting Hardware
- B. (1)-Canopy (W10",H0.79")
- C. (2)-Ball Nut
- D. (1)-SWIVEL
- E. (1)-Center Stem( 9.7MM,5.5")
- F. (4)-Candle Sleeve (W22MM,H2")